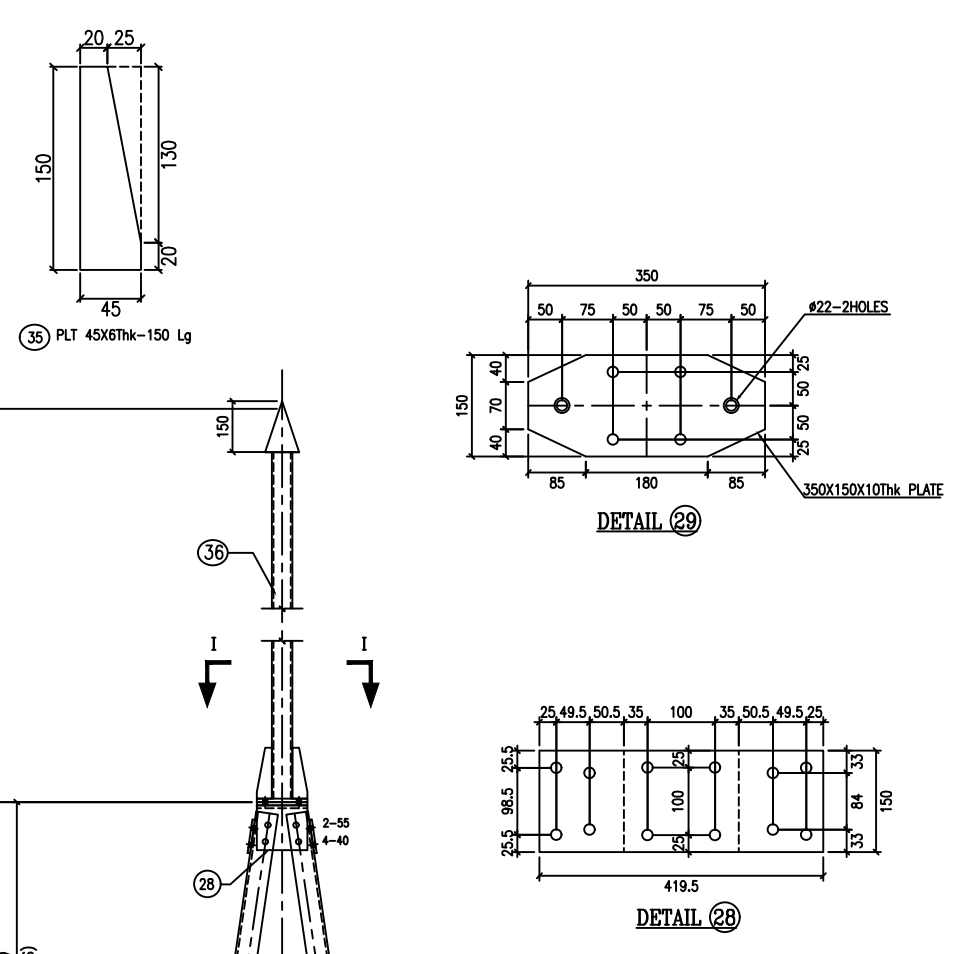
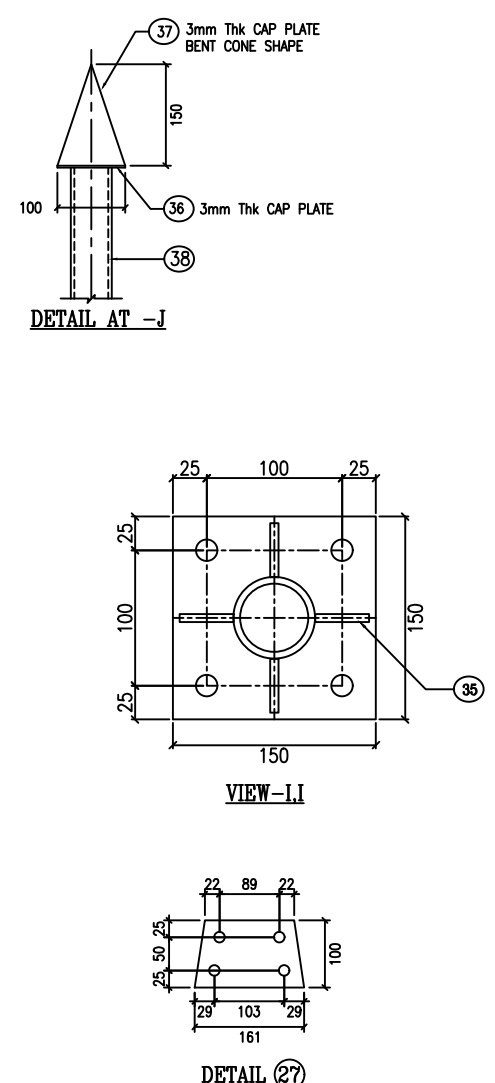
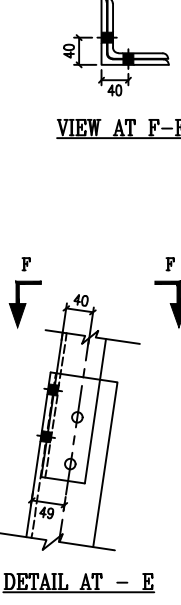
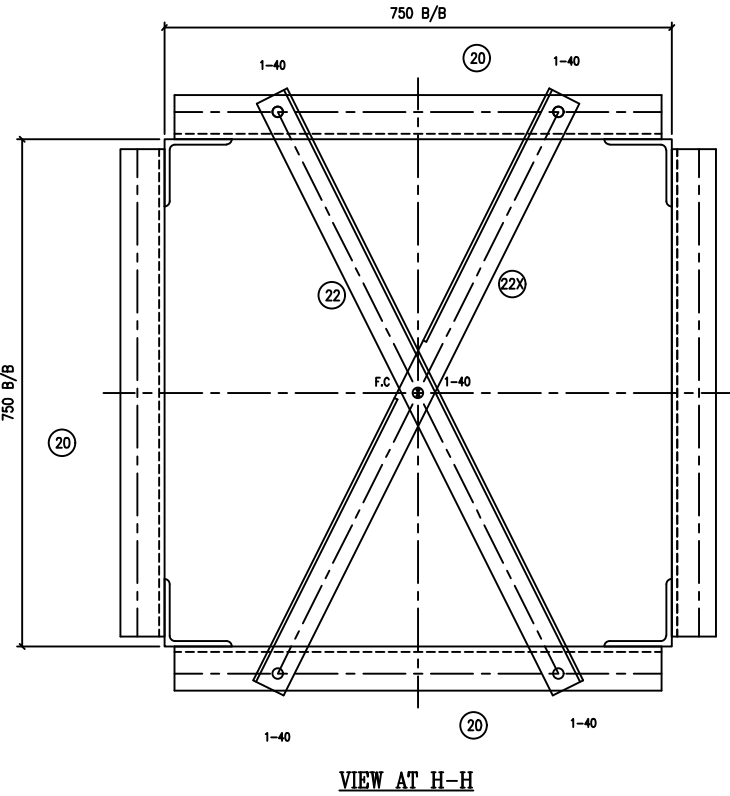


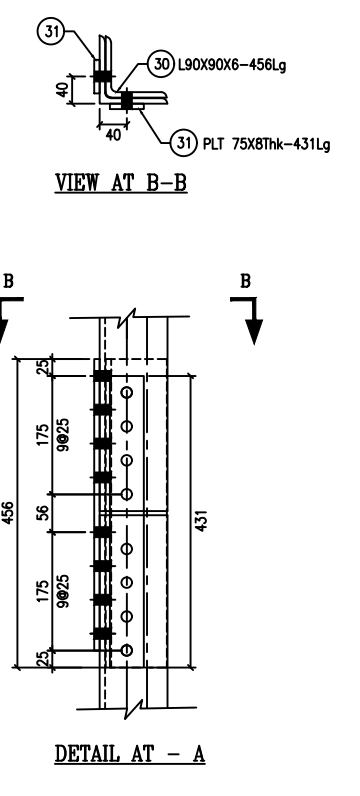
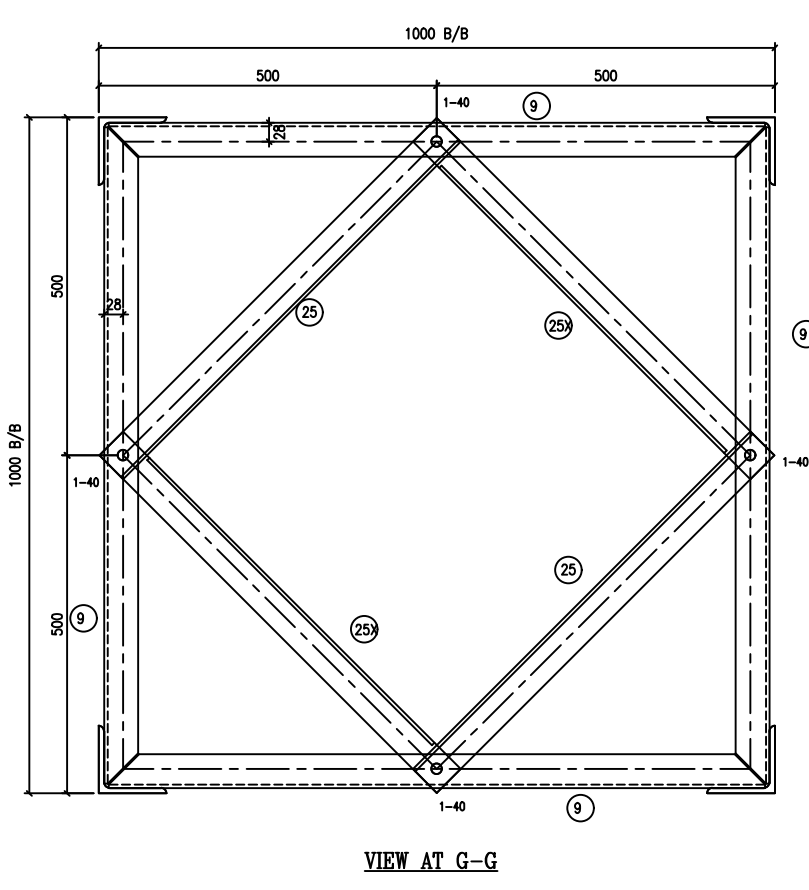
Approval Ltr No.: CEE/P&C/SET/EE(TL)/AEE-9/2021-22/10039-49 Dtd:05.10.2021



BILL OF MATERIAL									
ERRECTION MARK	DESCRIPTION	WIDTH IN MM	X	LENGTH IN MM	UNIT WEIGHT	WEIGHT PER PIECE	QTY	TOTAL WEIGHT IN KG	REMARKS
1	L 100X100X8			4222	12.10	51.09	1	51.086	
1X	L 100X100X8			4222	12.10	51.09	1	51.086	
2	L 100X100X8			4222	12.10	51.09	1	51.086	
2X	L 100X100X8			4222	12.10	51.09	1	51.086	
3	L 100X100X8			3894	12.10	47.12	1	47.117	
3X	L 100X100X8			3894	12.10	47.12	1	47.117	
4	L 100X100X8			3894	12.10	47.12	1	47.117	
4X	L 100X100X8			3894	12.10	47.12	1	47.117	
5	L 100X100X6			4363	9.20	40.14	1	40.140	
5X	L 100X100X6			4363	9.20	40.14	1	40.140	
6	L 100X100X6			4363	9.20	40.14	1	40.140	
6X	L 100X100X6			4363	9.20	40.14	1	40.140	
7	L 65X65X6			1682	5.80	9.76	1	9.756	
7X	L 65X65X6			1682	5.80	9.76	1	9.756	
8	L 65X65X6			1682	5.80	9.76	1	9.756	
8X	L 65X65X6			1682	5.80	9.76	1	9.756	
9	L 50X50X5			970	3.80	3.69	4	14.744	
10	L 50X50X5			1291	3.80	4.91	4	19.624	
11	L 50X50X5			938	3.80	3.56	4	14.256	
12	L 50X50X5			1326	3.80	5.04	4	20.156	
13	L 50X50X5			1359	3.80	5.16	4	20.656	
14	L 50X50X5			1339	3.80	5.09	4	20.352	
15	L 50X50X5			1320	3.80	5.02	4	20.064	
16	L 50X50X5			1187	3.80	4.51	4	18.044	
17	L 50X50X5			1170	3.80	4.45	4	17.784	
18	L 50X50X5			1154	3.80	4.39	4	17.540	
19	L 50X50X5			999	3.80	3.80	4	15.184	
20	L 65X65X6			720	5.80	4.18	8	33.408	
21	L 50X50X5			904	3.80	3.44	4	13.740	
21X	L 50X50X5			904	3.80	3.44	4	13.740	
22	L 50X50X5			978	3.80	3.72	2	7.432	
22X	L 50X50X5			978	3.80	3.72	2	7.432	
23	L 45X45X5			1072	3.40	3.65	2	7.290	
24	L 45X45X5			429	3.40	1.46	4	5.836	
25	L 50X50X5			706	3.80	2.68	2	5.366	
25X	L 50X50X5			706	3.80	2.68	2	5.366	
26	L 45X45X5			150	3.40	0.51	8	4.080	
27	8mm Plate	100	X	161	62.80	1.01	2	2.02	
28	8mm Plate	150	X	406	62.80	3.83	1	3.83	
29	10mm Plate	150	X	350	78.50	4.12	1	4.12	
30	L 90X90X6			456	8.20	3.74	4	14.956	
31	8mm Plate	75	X	431	62.80	2.03	8	16.24	
32	L 90X90X6			456	8.20	3.74	4	14.956	
33	8mm Plate	75	X	431	62.80	2.03	8	16.24	
34	10mm Plate	150	X	150	78.50	1.77	1	1.77	
35	8mm Plate Stiffener	45	X	150	62.80	0.42	4	1.70	
36	3mm Plate CAP	100	X	100	23.55	0.24	1	0.24	
37	3mm Plate CAP	160	X	267	23.55	1.01	1	1.01	
38	50NB PIPE (Medium)			2537	6.20	14.49	1	14.489	
WEIGHT STRUCTURE								986.043	

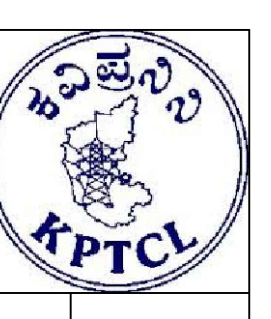
LIST OF NUT & BOLTS, WASHERS & STEP BOLTS					
SL.NO	DESCRIPTION	LENGTH IN MM	UNIT WT IN KG	QTY	TOTAL WEIGHT IN KGS
1	16.0 DIA STEP BOLT & NUTS	150	0.340	22	7.48
2	16.0 DIA BOLT & NUT	40	0.140	154	21.56
3	16.0 DIA BOLT & NUT	45	0.132	84	11.09
4	16.0 DIA BOLT & NUT	50	0.141	159	22.42
5	16.0 DIA BOLT & NUT	55	0.148	9	1.33
6	3.5 MM THK SPRING WASHER FOR 16.0 DIA	-	0.009	428	3.85
7	5 MM THK PACK WASHERS FOR 16.0 DIA	-	0.036	13	0.47
TOTAL WEIGHT OF NUT & BOLTS					68.20

WEIGHT OF STRUCTURAL STEEL	986.043
WEIGHT OF NUT & BOLTS	68.200
TOTAL WEIGHT OF STRUCTURE	1054.243



- NOTES:
1. ALL DIMENSIONS ARE IN MM.
  2. ALL HOLES ARE 17.5MM DIA. FOR 16MM DIA. BOLTS.
  3. ALL STEEL SECTIONS SHALL CONFORM TO IS: 2062.
  4. ALL STEEL SECTIONS, BOLTS, NUTS & PACK WASHERS ARE TO BE HOT DIP GALVANIZED.
  5. ALL BOLTS SHALL CONFORM TO IS:12427(2001), WITH MECHANICAL PROPERTIES CLASS 5.6 AND NUTS SHALL CONFORM TO IS: 1367(PART-VI) OF PROPERTIES CLASS-5.
  7. DIMENSIONAL AND WEIGHT TOLERANCE  $\pm 10\%$ .

STATION STRUCTURE OF TYPE TOWER -1T1  
(FOR 110/11KV SUBSTATIONS ONLY)



KPTCL/P&C/TECH/110KV/1T1	AEE	EE	SEE	CEE
DRAWING NO.	DRAWN/CHECKED	SUBMITTED	RECEIVED	APPROVED

